

Online HorseCollege



Student Resources

Study Tips & Important Information

www.OnlineHorseCollege.com

www.OnlineHorseCollege.com

*(Ausintec Academy P/L ATF Ausintec Academy Trust T/as)
Ausintec Academy*

*Mailing Address:-
392 Bribie Island Road,
CABOOLTURE QLD 4510
(between Brisbane & Sunshine Coast)
AUSTRALIA*

*Registered Training Organisation No:31352
Centrelink Approval No: 4P530
CRICOS Provider Code: Pending*

*Phone within Australia (07) 3102 5498
Outside Australia + 61 7 3102 5498
Request@OnlineHorseCollege.com*

Study Tips

➤ Read assessment questions carefully

The theory assessments or quizzes contain anywhere from ten to twenty questions per quiz. Some of these questions are multiple choice where you will need to select one correct answer from a list.

There are also multiple response questions which are similar to multiple choice in that there is a list of possible answer however there will be more than one single correct answer and all suitable answers will need to be selected in order to get the question right. These questions are indicated with the words “Multiple Response” before the question is stated.

Multiple Response: Which of the following measurements in inches and centimetres (you need to select two answers) are equal to one hand when measuring a horse?

Another style of question requires you to enter your own answer in an essay style response. When providing your answer ensure that you understand what the question is asking you and that the information you provide addresses what the question has asked. Also make sure that you meet the required word amount when answering. Failure to answer the question properly or provide sufficient information will mean you will be asked to re-submit your answer.

There are two styles of questions where you will be required to put a list into the correct sequence. One is a drag and drop style where you select the answer and drag it up or down to the appropriate position in the sequence. The other is where you select from a list in a drop down menu.

Starting with the choice 'no markings', continue to place the following markings in order from the least amount of white on a horses leg to the most


white sock/fetlock

white half stocking/cannon

-- Select --

no markings

white half pastern



Drop down

Starting with the choice 'no markings', continue to place the following markings in order from the least amount of white on a horses face to the most


1. no markings

2. blaze

3. baldy face

4. star

5. stripe



Drag and drop

Study Tips (cont.)

Matching styled questions require you to match the selection with the correct answer. This is either in a drag and drop format or selected from a drop down menu.

Match the following descriptions about horses
(When completing this question, refer to the terms that are generally accepted in your area)

mare	female horse three/four years and under
gelding	male horse three/four years and under
stallion	female horse over four/five years

Drag and drop

Drop down

There are four common ways that man has made for identifying horses, match them to the correct description

a horse is permanently marked with scar tissue	-- Select --
a horses is permanently marked by discoloring the hair making it white	tattoo
a horse is permanently marked by making the skin very dark	-- Select --

Fill in the blank question require you to type in an answer. When providing the answer ensure that your spelling is correct and that you do not include any punctuation, doing so will mean you answer will be interpreted as incorrect. This style of questions accepts numbers and letters.

If today's date is 1st September 2010, how old could a horse be with this brand?

NQ7
17
1

Hotspot questions will ask you to select a specific location on an image. Its as simple as a point and click.

On the image indicate where the frog is



Study Tips (cont.)

Finally there are true or false questions, which are fairly self explanatory. A question or statement will be given to which you have to decide if the information is true or false.

To find out how to send in the results of your assessments please view this page (you will need to be logged into the site to view this information):-

<http://onlinehorsecollege.edu.au/courses/hricert3/online-assessment-submissions/>

You can also access this page under 'Student Support' > 'Online Quiz Assessment Submissions' from the right hand side of your course page.

In the event you have trouble with the quiz software please view this page (once again you will need to be logged in):-

<http://onlinehorsecollege.edu.au/courses/hricert3/quiz-software-not-working/>

You can also access this information from the orientation page of your course. Please let us know if any of the solutions on this page work or do not work for you.

➤ **The 'Print Results' button at the end of the quiz doesn't work**

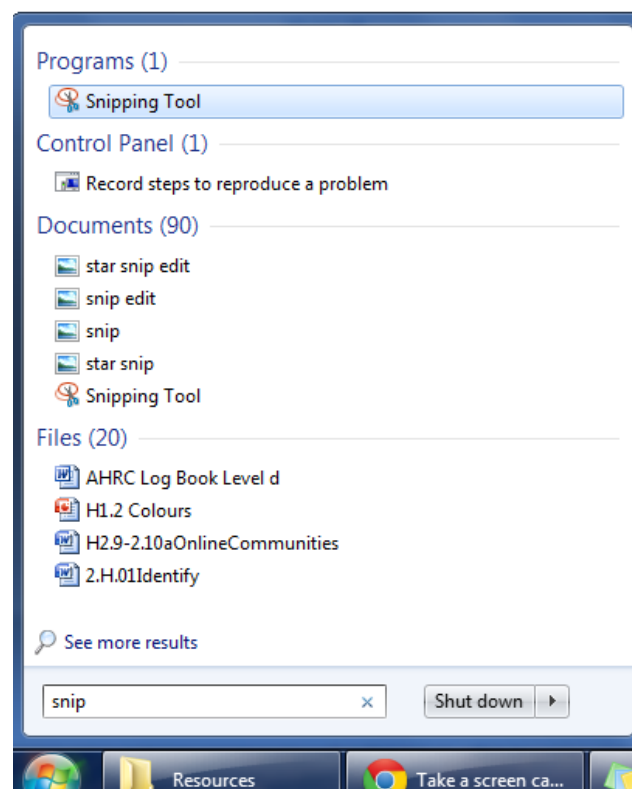
Should you encounter problems with the quiz software and the troubleshooting page hasn't worked then you will need to send in to us a screen shot of the passing results slide (only the result slide saying that you have passed the quiz; indicated with a green tick will be accepted) along with the answers you have provided to any and all essay questions.

Study Tips (cont.)

➤ How to take a Screen Shot

How to take a Screen Shot (for Windows)

- 1) Click on the Start icon at the bottom left of the screen
- 2) In the search bar type "snipping tool". Select the "Snipping tool" icon. Alternatively the snipping tool can be found under "Accessories" in the Start icon or by pressing Ctrl & Print Screen (prt sc) buttons together.



- 3) A pop up window should appear, then select "New" and your mouse cursor will become a + with which you will click and drag over the area you want in your screen shot.

➤ Read practical assessment criteria carefully

Practical assessments can be time consuming so read through the criteria before undertaking assessment. Ensure you understand what you will be required to demonstrate in order to be assessed as competent. Addressing and meeting the assessment requirements the first time around will save time (and possibly money) as opposed to having to re-submit an assessment because you didn't demonstrate all that was required.

Study Tips (cont.)

➤ Practical Assessment- Self assessment

Practical assessments can be found at the end of each week for most courses. There are three different sections of assessment in the practical assessment books. The first is a self assessment. This section is for you to conduct your own evaluation on how you perform the required exercises. Use it to ensure you are demonstrating the practical skill to the level and with the desired technique described by the assessment book. This section is designed to be carried out before you have an assessor assess you.

➤ Practical Assessment- Peer assessment

This is section two in the practical assessment books and is similar to the self assessment section in that it is designed to ensure you are demonstrating the practical skill to the level and with the desired technique described by the assessment book. A 'peer' is another person (friend, family member, work colleague) preferably with some horse experience, who can give feedback on your performance of the task. The self and peer assessments help to make certain that you are consistent in your ability to perform the assessment task.

➤ Practical Assessment- Trainer/Assessor assessment

Assessor sections are for the qualified or suitably experienced person who will determine whether you are competent in the practical task. You are required to be assessed twice by an assessor, either on two separate occasions by the same assessor or by two different assessors. Again this makes sure you are consistent in your performance and execution of the task. More information on assessors (such as who is qualified to assess which sections practical assessment) can be found here:-

<http://www.OnlineHorseCollege.com/education/Info/2009-11AssessorApplication.pdf>

Study Tips (cont.)

➤ Establish a Routine

Set aside a particular time each day for study and revision and ensure that you stick to and follow it.

➤ Create a Study Environment

Set up a study area away from noise and other distractions such as television and radio. Let other house mates know that you wish to be undisturbed while studying (a sign on the door saying "Study in Progress" or similar will help to remind people not to disturb or distract you).

The study environment should have good lighting, comfortable seating and overall a pleasant environment.

➤ Look after yourself

Exercise regularly as it will boost your energy (ride your horse!), drink plenty of water and avoid sugary foods. Make sure you get enough sleep each night.

➤ Vary your study program

If you have different study areas vary between each subject daily. Do different types of work in different study sessions (e.g., read the workbook, watch the video, do the extension lessons).

➤ Reward yourself for studying

Catch up with friends, watch your favourite program or take part in your favourite hobby as a way of rewarding yourself for completing study requirements. It can help to set mini goals to accomplish to assist in keeping you motivated and completing the required work.

Study Tips (cont.)

➤ Essential Information

Ensure you have all the information you will need for the study session prior to starting such as reading materials, course profiles, assessment materials and textbooks.

➤ Use a term planner

Term planner will help map out what the upcoming weeks of study look like. Use different coloured pens to mark dates of commitments which cannot be changed, commitments which are important but not essential and another colour for when to start assignments and exam preparations.

➤ Use a daily organiser or planner

Use a to-do list all things you need to get done in the day in order of priority, starting with the tasks you must do, then should do and could do.

➤ Seek help

Whenever you come across a problem which you cannot solve or a concept you are having trouble understanding contact OnlineHorseCollege.